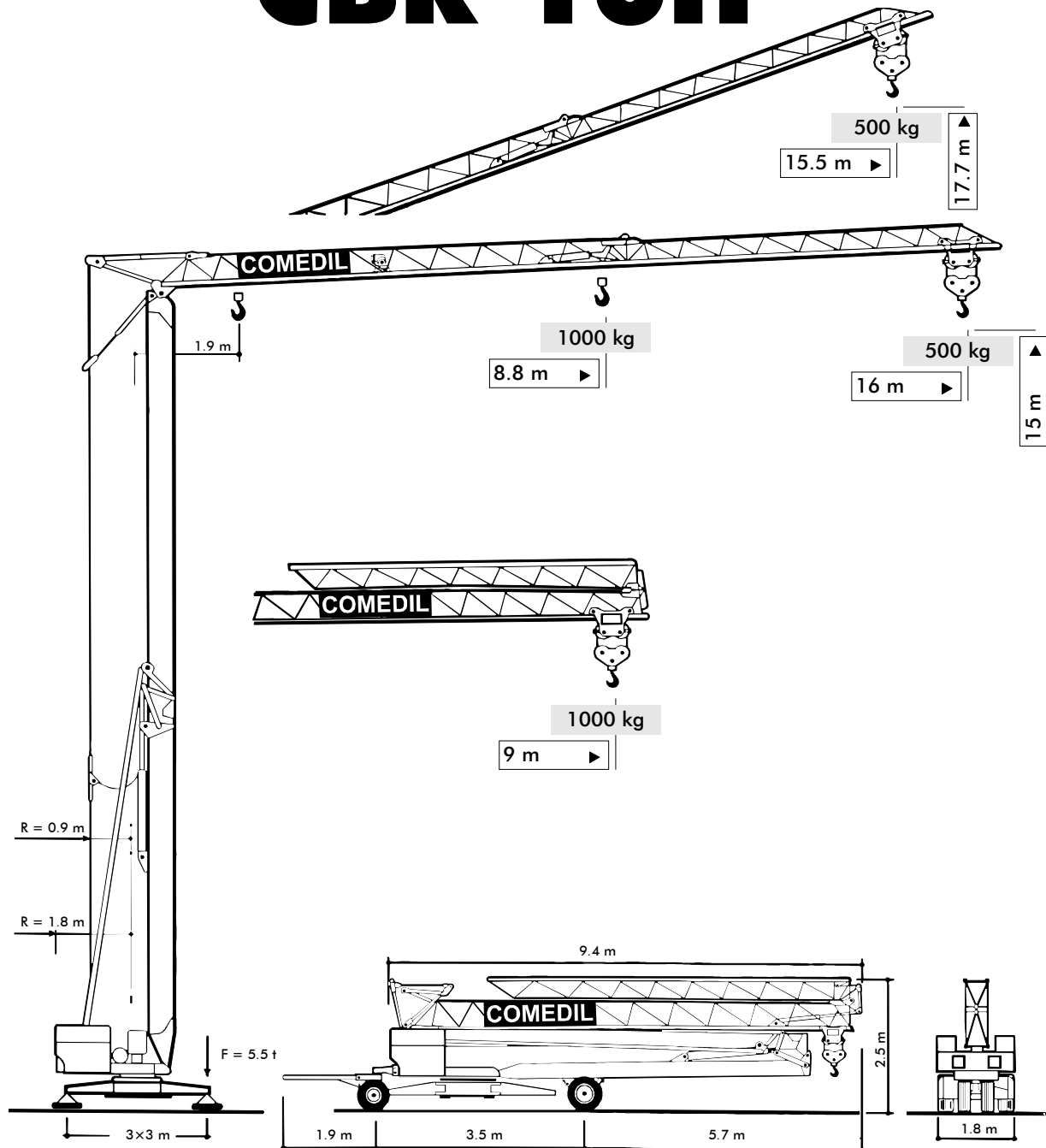




Gru a montaggio rapido

**Self-erecting Crane • Grue à montage rapide
Schnellmontagekran • Grúa de montaje rapido**






CBR 16H-1

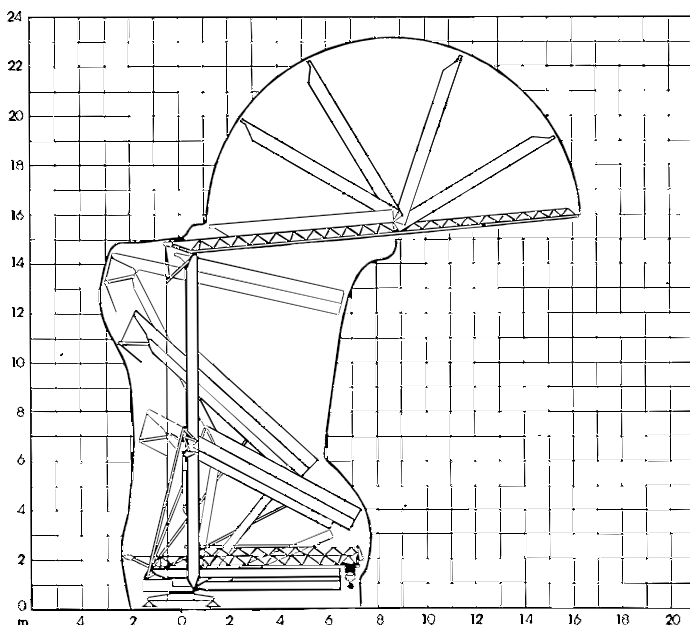
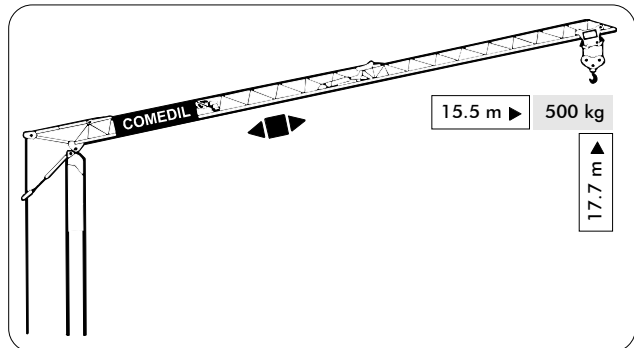
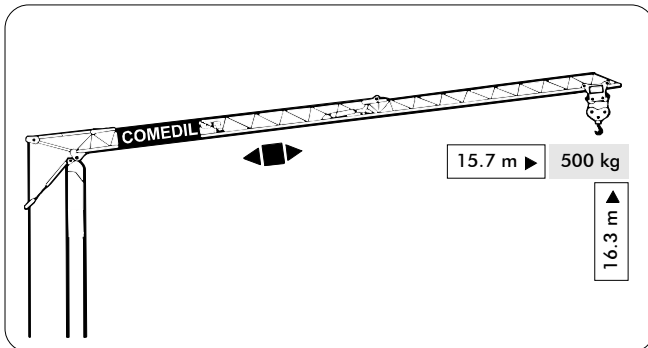


simple, available and cost effective™



- montaggio oleodinamico integrale
- full hydraulic erection
- vollhydraulische Montage
- montage hydraulique intégral
- montaje hidraulico integral
- zincatura a caldo torre e freccia
- galvanized tower and jib
- feuerverzinkt
- flèche et mât galvanisés
- torre y pluma cincadas en caliente
- trasportabile con zavorra di montaggio
- trailerable with erection ballast
- verfahrbar mit Montage-Ballast
- transportable avec lest de montage
- transportable con lastre de montaje

CBR 16H-1			Trifase 380			Monofase 220		
			m/min	kg	kW	m/min	kg	kW
Sollevamento Hoisting Heben Levage Elevaciòn			12	1000	2.2	11	1000	1.7
			24	700	2.9	22	600	1.7
Distribuzione • Trolleying Katzfahren • Distribution • Distribuciòn			23		1.1	23		1.5
Rotazione • Slewing • Schwenken Orientation • Orientaciòn			0.3 → 1.0 tr/min - U/min - rpm		1.1 da Nm	0.3 → 1 tr/min - U/min - rpm		0.9 da Nm
Montaggio • Erection • Montage • Montage • Montaje			1.5			1.8		
Potenza elettrica necessaria • Power Requirements • Anschlusswert Puissance électrique nécessaire • Potencia electrica necesaria			10 kVA			3 kVA		
Refe elettrica • Mains Supply • Netzstrom • Réseau • Alimentacion			380 V - 50 Hz			220 V - 50 Hz		
Zavorra • Ballast • Ballast • Lest • Lastre		4630 kg	Peso gru • Crane weight • Konstruktionsgewicht • Poids de la grue • Peso della grua				3600 kg	



98/37CE - 87/405 CEE - 89/336 CEE
DIN 15018
DIN 15019



COMEDIL

Gru Comedil s.r.l.
Via S. Egidio 42/A
33074 Fontanafredda (PN) - Italy
Tel. 0434 567 311 - Telefax 0434 998631
Internet e-mail: info@comedil.com
Internet home page: http://www.comedil.com



AGENTE / DEALER / HÄNDLER / DISTRIBUTEUR / AGENTE