

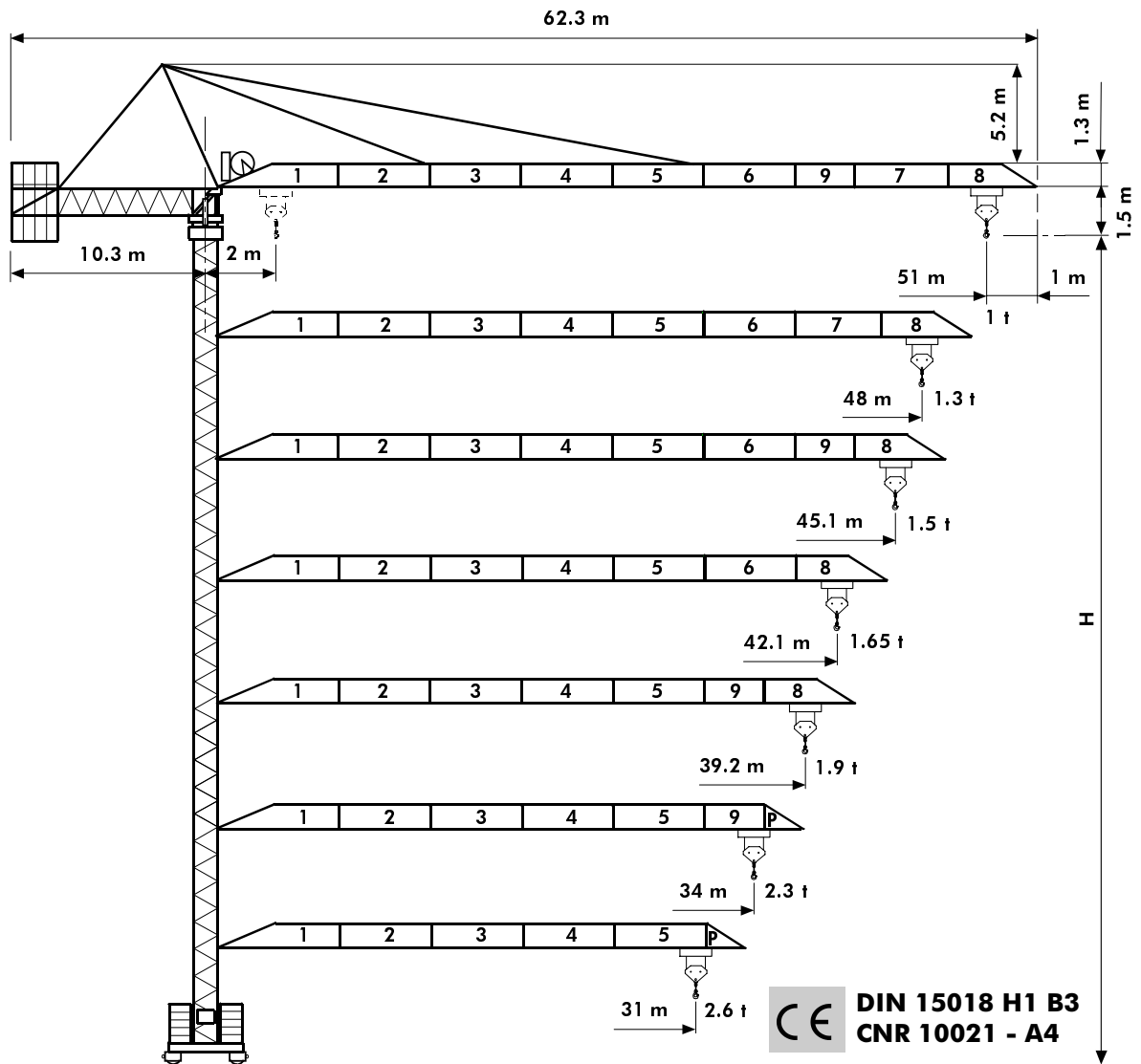
COMEDIL

Gru a torre "City"

"City" Tower Crane • Grue à tour "City"

"City" Turmdrehkran • Grua torre "City"

GTS 511/A-6



simple, available and cost effective™



Diagramma di portata
Load Diagram

I
GB

Curbes de charges
Lastkurven

F
D

Curvas de cargas

E

GTS 511/A 10-30

⚙	⚙	m	10	13	15	18	20	23	25	28	31	34	36	39.2	42.1	45.1	48	51
3 t	- 20.6 m	t	3	3	3	3	3	2,66	2,41	2,12	1,88	1,68	1,57	1,41	1,29	1,18	1,09	1
3 t	- 23.5 m	t	3	3	3	3	3	3	2,83	2,49	2,21	1,98	1,85	1,67	1,53	1,41	1,30	
3 t	- 24.9 m	t	3	3	3	3	3	3	3	2,64	2,35	2,11	1,97	1,78	1,63	1,50		
3 t	- 25 m	t	3	3	3	3	3	3	3	2,66	2,37	2,13	1,99	1,80	1,65			
3 t	- 26.3 m	t	3	3	3	3	3	3	3	2,80	2,50	2,25	2,10	1,90				
3 t	- 26.9 m	t	3	3	3	3	3	3	3	2,87	2,56	2,30						
3 t	- 27.1 m	t	3	3	3	3	3	3	3	2,92	2,60							

GTS 511/A 10-60

⚙	⚙	⚙	m	10	13	15	18	20	23	25	28	31	34	36	39.2	42.1	45.1	48	51
3 t	- 20.3 m		t	3	3	3	3	3	2,62	2,38	2,09	1,86	1,67	1,55	1,40	1,28	1,17	1,08	1
6 t	- 10.2 m		t	6	4,61	3,91	3,16	2,78	2,34	2,10	1,81	1,58	1,39	1,27	1,12	1	0,89	0,80	0,72
3 t	- 23.5 m		t	3	3	3	3	3	3	2,80	2,46	2,19	1,97	1,84	1,67	1,53	1,41	1,30	
6 t	- 11.8 m		t	6	5,41	4,61	3,74	3,30	2,79	2,52	2,18	1,91	1,69	1,56	1,39	1,25	1,13	1,02	
3 t	- 24.7 m		t	3	3	3	3	3	3	2,97	2,62	2,33	2,10	1,96	1,78	1,63	1,50		
6 t	- 12.4 m		t	6	5,74	4,89	3,98	3,52	2,98	2,69	2,34	2,05	1,82	1,68	1,50	1,35	1,22		
3 t	- 25 m		t	3	3	3	3	3	3	2,65	2,36	2,12	1,99	1,80	1,65				
6 t	- 12.6 m		t	6	5,80	4,95	4,02	3,56	3,01	2,72	2,37	2,08	1,84	1,71	1,52	1,37			
3 t	- 26.2 m		t	3	3	3	3	3	3	2,79	2,49	2,24	2,10	1,90					
6 t	- 13.2 m		t	6	6	5,22	4,25	3,76	3,19	2,89	2,51	2,21	1,96	1,82	1,62				
3 t	- 26.6 m		t	3	3	3	3	3	3	2,86	2,56	2,30							
6 t	- 13.5 m		t	6	6	5,35	4,36	3,86	3,28	2,97	2,58	2,28	2,02						
3 t	- 27.3 m		t	3	3	3	3	3	3	2,91	2,60								
6 t	- 13.7 m		t	6	6	5,45	4,44	3,93	3,34	3,02	2,63	2,32							

Altre installazioni
Other configurations

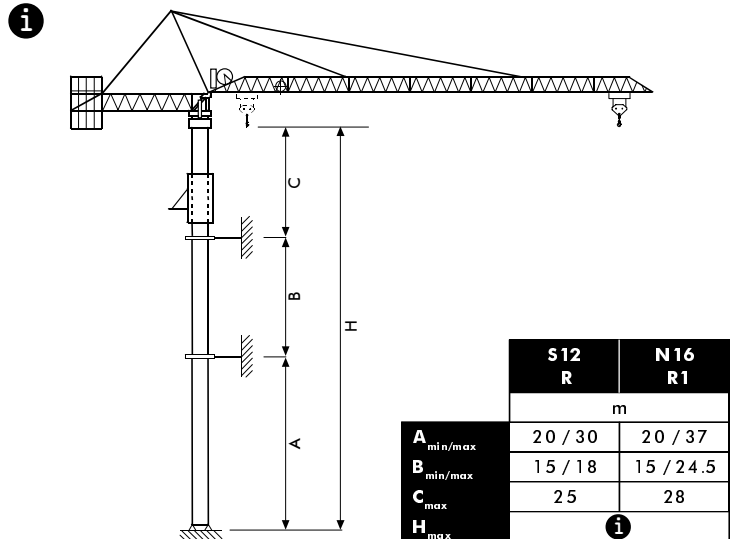
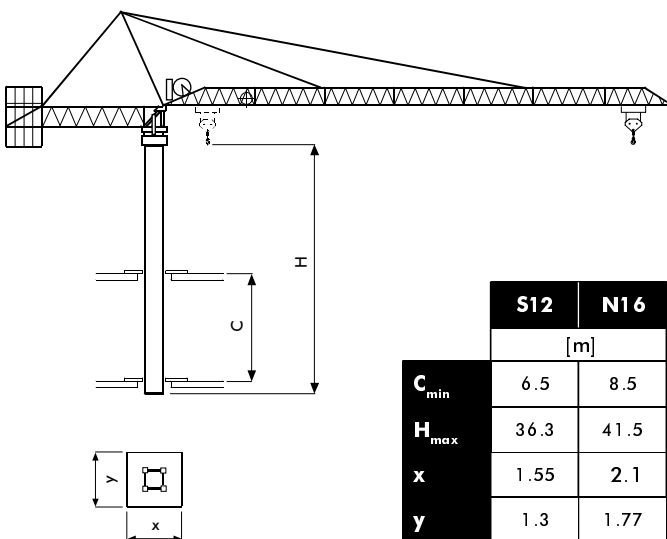
I
GB

Autres implantations
Aufstellmöglichkeiten

F
D

Otras implantaciones

E



i Consultateci
C Distanza fra i collari

I Consult us
Distance between collars

GB Nous consulter
Distance entre cadres

F Consultarnos
Distancia entra marcos

E Auf Anfrage
Abstand zwischen den Rahmen

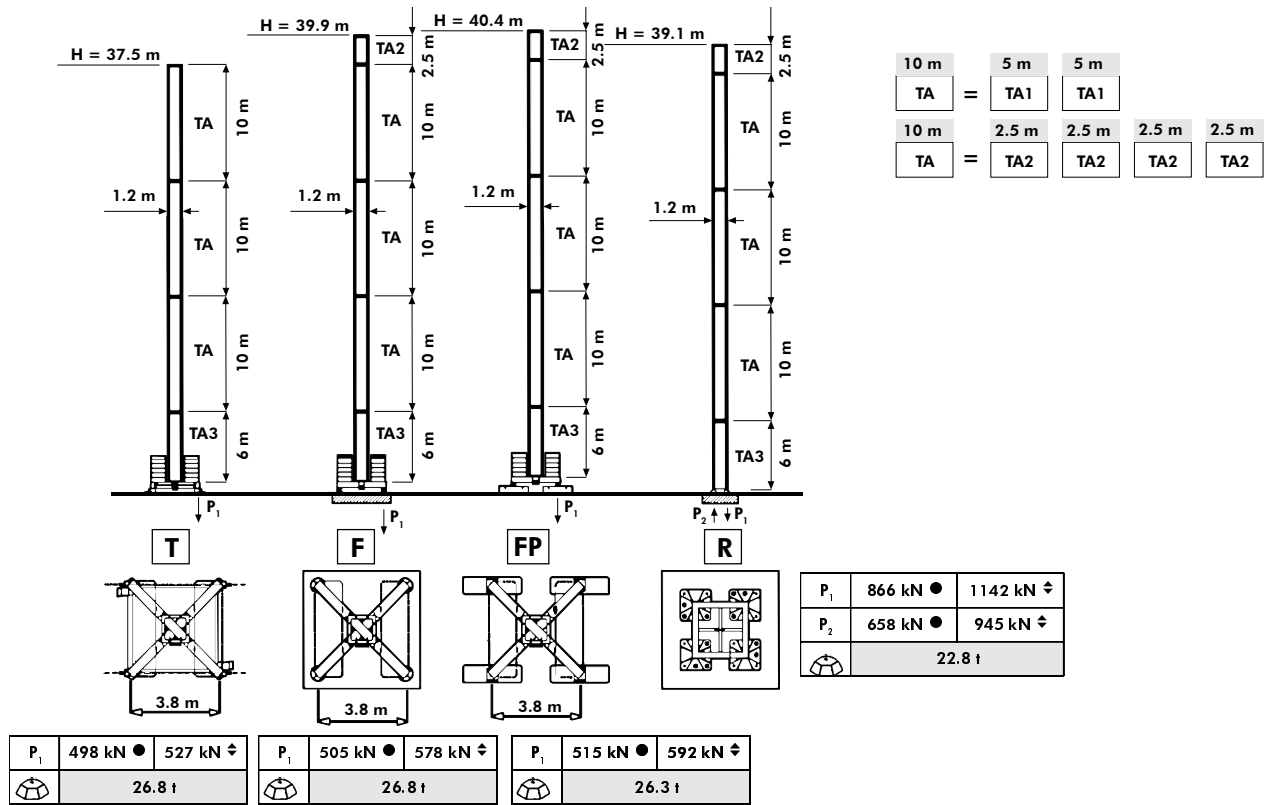
D

Torre **I**
Mast **GB**

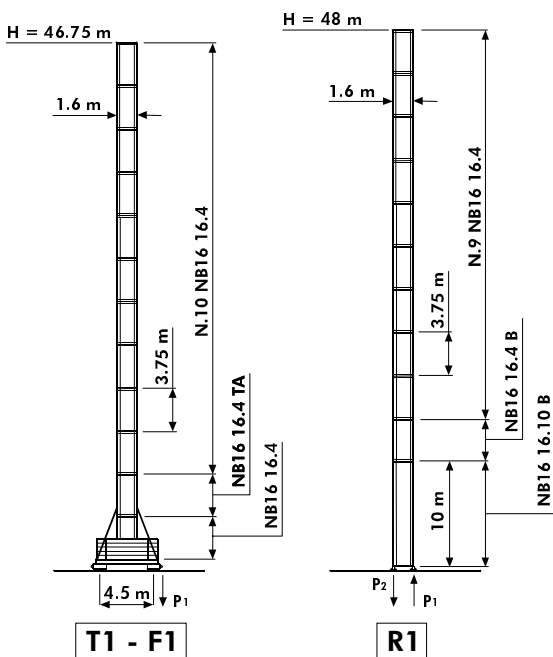
Mât **F**
Turm **D**

Mástil **E**

S12 (CNR - DIN)



N16 (CNR)



H	Altezza massima sotto gancio	I	Höchste Hackenhöhe	D
●	In servizio		In Betrieb	
◊	F uori servizio		Außer Betrieb	
⊕	A vuoto, senza zavorra, braccio max., altezza max.		Ohne Last und Ballast, mit Maximalausleger und Maximalhöhe	
H	Max. under hook height	GB	Maxima altura bajo gancho	E
●	In service		En servicio	
◊	Out of service		Fuera de servicio	
⊕	Without load, without ballast, max. jib and max. height		Sin carga, sin lastre, con pluma y altura máxima	
H	Hauteur maxi. sous crochet	F		
●	En service			
◊	Hors service			
⊕	A vide, sans lest, avec flèche et hauteur maximum			

P ₁	667 kN ●	726 kN ◊
	31.3 t	

P ₁	942 kN ●	1275 kN ◊
P ₂	785 kN ●	1079 kN ◊
	27.3 t	

Meccanismi
Mechanisms




I
GB

Mécanismes
Antriebe



F
D






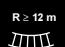
Mecanismos

E



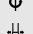

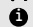
	kVA		
 20 AG 30 HB 25 AG 30 HB	35 * 40 *	400 V - 50 Hz 400 V - 50 Hz / 460 V - 60 Hz	■ 87/405


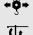
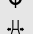


* Gru senza traslazione / Crane without travelling equipment / Grue sans translation / Krane ohne Schienenfahren / Grúa sin traslación


		m/min	f	kW		
	20 AG 30 HB (50 Hz)		6	3	15	196 m
			26	3		
			52	1.5		
			3	6		
			13	6		
			26	3		
25 AG 30 HB			7	3	17.5	241 m (50 Hz) 196 m (60 Hz)
			32	3		
			63	1.5		
			3.5	6		
			16	6		
			31.5	3		

	DAD 2 2	0-23-46 m/min	1.1 - 2.2 kW
	DSR 3 50	0⇒10⇒30⇒60 m/min	50 - 40 Nm
i		SSR 11 50	0⇒0.8 r.p.m.
 	▲ TAD 1 RP 2M3	0-24 m/min	2 × 3 kW
	● TAD 2 RP 2M3		
 R ≥ 12 m	i		

	▲	●
	Max. H [m]	
T	37.6	--
T₁	--	46.75

	Sollevamento	I	Levage	F
	Traslazione carrello		Distribution	
	Rotazione		Orientation	
	Traslazione		Translation	
	Direttiva sul livello acustico		Directive sur le niveau acoustique	
i	Consultateci		Nous consulter	

	Hoisting	GB	Heben	D	Elevación	E
	Trolleying		Katzfahren		Distribución	
	Slewing		Schwenken		Orientación	
	Travelling		Schienenfahren		Traslación	
	Directive on noise level		Richtlinie für den Schall-Leistungspegel		Directiva sobre el nivel acustico	
i	Consult us		Auf Anfrage		Consultarnos	

i	I Argani a variazione di frequenza
	GB Variable frequency winches
	F Treuils à variation de fréquence
	D Ubwinde mit Frequenzänderung
	E Variación de frecuencia

AGENTE / DEALER / HÄNDLER / DISTRIBUTEUR / AGENTE