

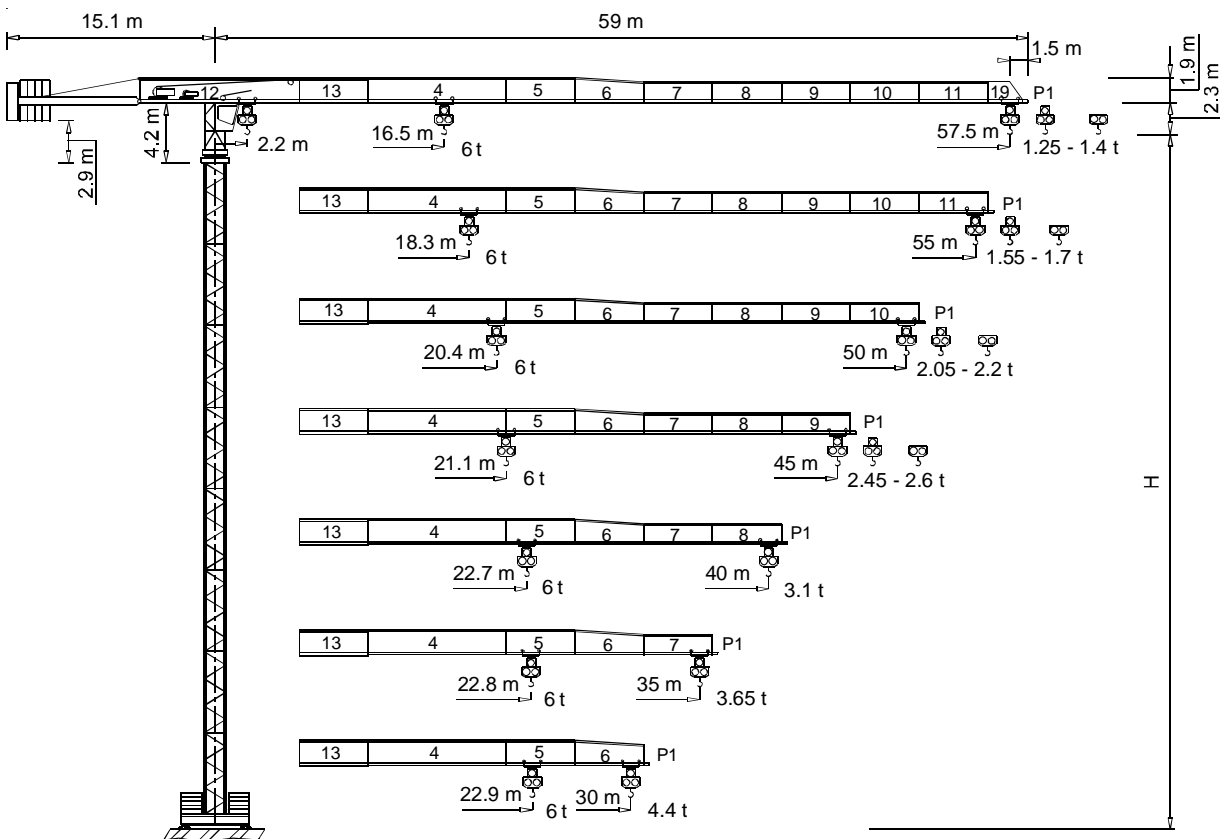


**TEREX | COMEDIL**

**Gru a torre "Flat Top"**

**"Flat Top" Tower Crane • Grue à tour "Flat Top"**

**"Flat Top" Turmdrehkran • Grua torre "Flat Top"**



**CE FEM 1.001 A3**

**THE ULTIMATE CRANE™**

Dati illustrativi non impegnativi  
Con riserva di modifica senza preavviso

Specifications and data not binding  
Subject to modification without notice

Données techniques seulement indicatives  
Modifications réservées sans préavis

Angaben und Beschreibung unverbindlich  
Änderungen vorbehalten ohne weitere Mitteilung

Dibujos y datos sin compromiso  
Modificaciones reservadas sin preaviso

UTE.DOC. REV.005

**"CITY" CTT 121-6 TS16**



# CTT 121-6

Diagramma di portata  
Load Diagram

I  
GB

Courbes de charges  
Lastkurven

F  
D

Curvas de cargas

E

		CTT 121-6												
		10	15	20	25	30	35	40	45	50	55	57.5		
3 t	- 31.12 m	3	3	3	3	3	2.61	2.22	1.92	1.68	1.48	1.4		
3 t	- 29.73 m	3	3	3	3	2.97	2.45	2.06	1.77	1.53	1.33	1.25		
6 t	- 16.5 m	6	6	4.81	3.7	2.97	2.45	2.06	1.77	1.53	1.33	1.25		
3 t	- 34.51 m	3	3	3	3	3	2.95	2.52	2.18	1.92	1.7			
3 t	- 33.01 m	3	3	3	3	3	2.79	2.36	2.03	1.77	1.55			
6 t	- 18.28 m	6	6	5.41	4.18	3.37	2.79	2.36	2.03	1.77	1.55			
3 t	- 38.55 m	3	3	3	3	3	3	2.87	2.5	2.2				
3 t	- 36.92 m	3	3	3	3	3	3	2.72	2.35	2.05				
6 t	- 20.41 m	6	6	6	4.76	3.85	3.2	2.72	2.35	2.05				
3 t	- 39.86 m	3	3	3	3	3	3	2.99	2.6					
3 t	- 38.19 m	3	3	3	3	3	3	2.84	2.45					
6 t	- 21.1 m	6	6	6	4.94	4	3.33	2.84	2.45					
3 t	- 40 m	3	3	3	3	3	3	3						
6 t	- 22.68 m	6	6	6	5.37	4.36	3.64	3.1						
3 t	- 35 m	3	3	3	3	3	3							
6 t	- 22.75 m	6	6	6	5.39	4.37	3.65							
3 t	- 30 m	3	3	3	3	3								
6 t	- 22.88 m	6	6	6	5.42	4.4								

Altre installazioni  
Other configurations

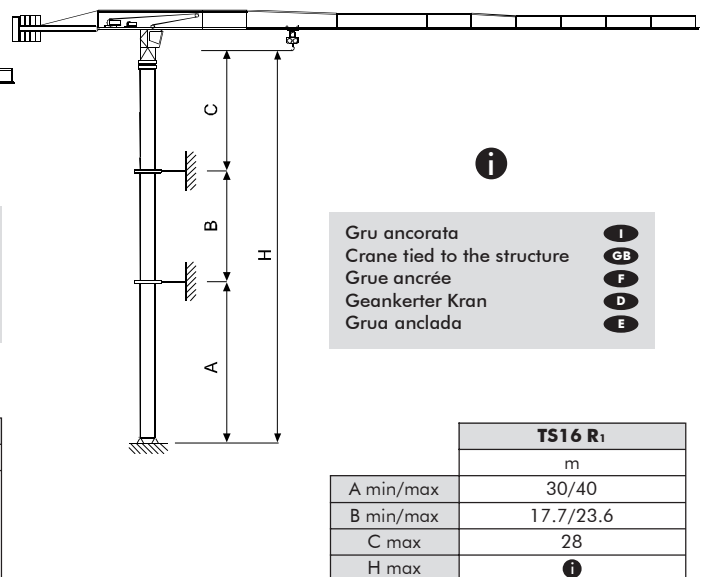
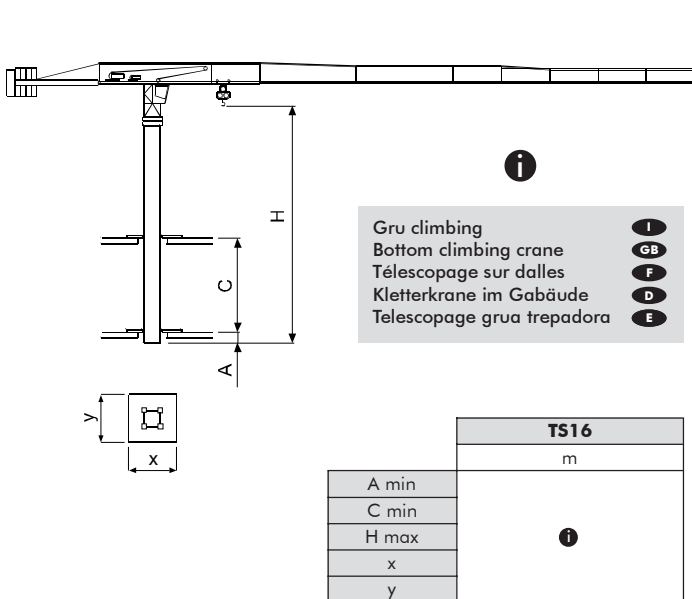
I  
GB

Autres implantations  
Aufstellmöglichkeiten

F  
D

Otras implantaciones

E





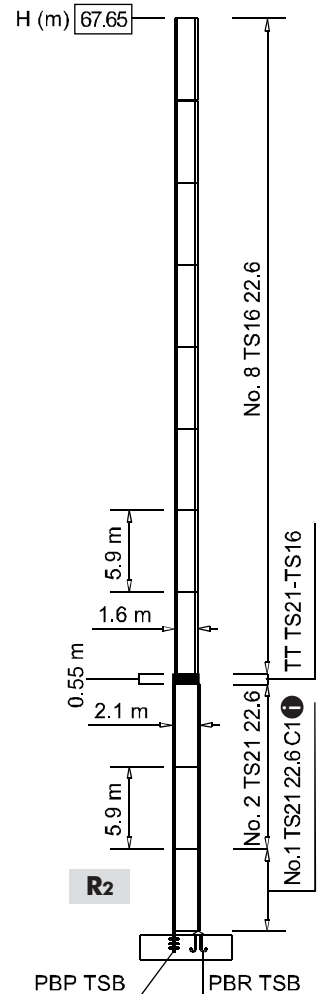
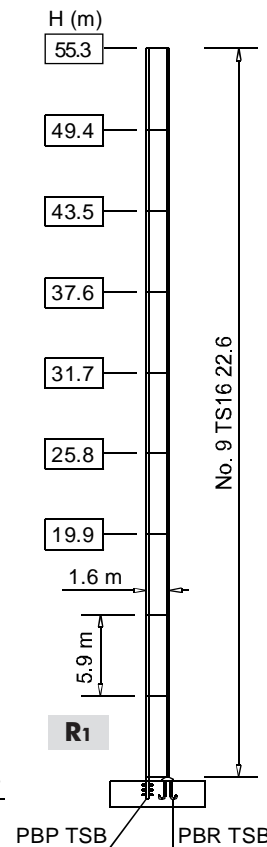
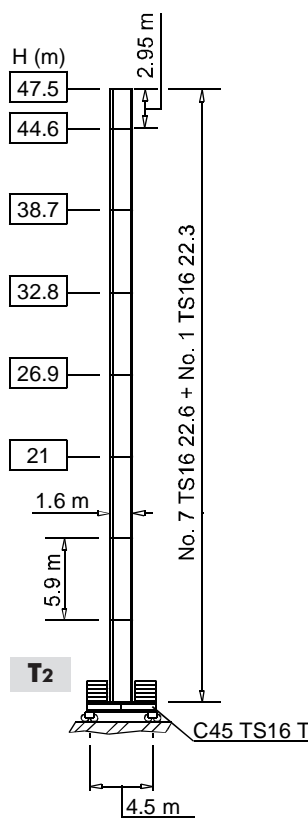
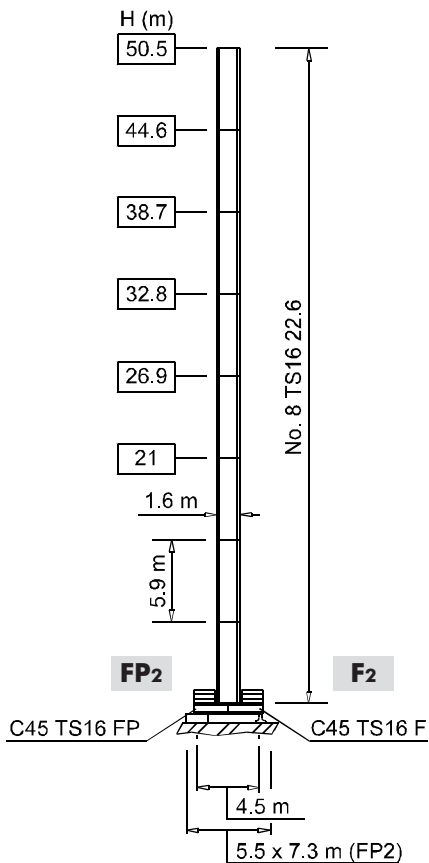
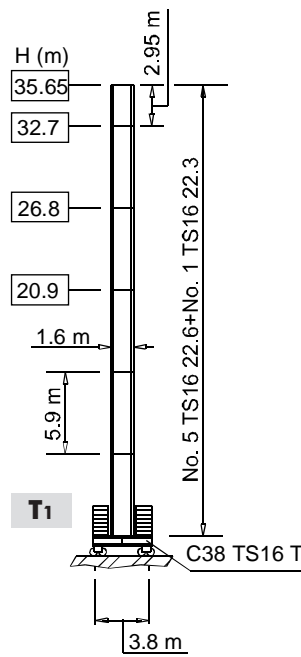
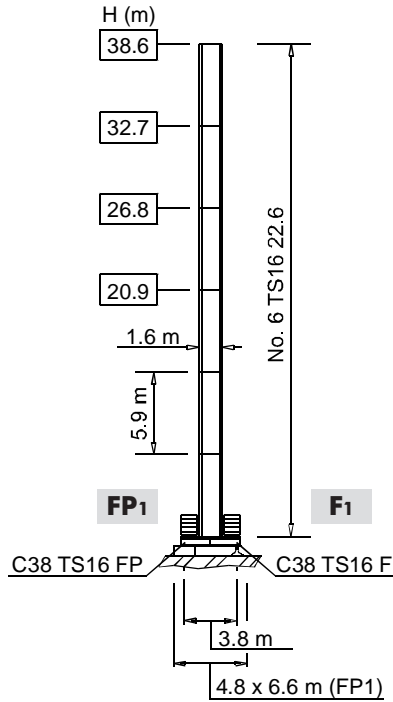
# CTT 121-6

Torre **I**  
Tower **GB**

Tour **F**  
Turm **D**

Mástil **E**

## TS16



- I** Le prolunghe TS sono disponibili in lunghezza 11.8 m, 5.9 m, 2.95 m.
- GB** The available lengths for the TS tower sections are 11.8 m, 5.9 m, 2.95 m.
- F** Les éléments de mât TS sont disponibles en longueur 11.8 m, 5.9 m, 2.95 m.
- D** Die Turmschüsse TS sind mit Längen 11.8 m, 5.9 m, 2.95 m verfügbar.
- E** Los tramos de torre TS son disponibles en las medidas de largo 11.8 m, 5.9 m, 2.95 m.



# CTT 121-6

Meccanismi  
Mechanisms



Mécanismes  
Antriebe



Mecanismos



18 APC 30	50 * kVA	400 V - 50 Hz	2000/14/CE
22 AFC 30	56 * kVA	400 V - 50 Hz / 460 V - 60 Hz	

\* Gru senza traslazione / Crane without travelling equipment / Grue sans translation / Krane ohne Schienenfahren / Grúa sin traslación

		m/min	t	kW	
18 APC 30		7	3	18	220 m
		30	3		
		59	1.5		
		3.5	6		
		15	6		
		29.5	3		
22 AFC 30 (VARIANT)		0 ⇒ 2.4	3	22	300 m 380 m (LEBUS)
		2.4 ⇒ 9	3		
		9 ⇒ 38	3		
		38 ⇒ 61	1.88		
		61 ⇒ 77	1.43		
		0 ⇒ 1.2	6		
		1.2 ⇒ 4.5	6		
		4.5 ⇒ 19	6		
		19 ⇒ 30.5	3.76		
		30.5 ⇒ 38.5	2.86		

	DVF 3 4 (VARIANT)	0 ⇒ 6 ⇒ 32 ⇒ 64 m/min	4 kW
	SSR 2 2 50	0.76 r.p.m.	2 × 50 Nm
	▲ TAD 2RP 2M3	0 - 24 m/min	2 × 3 kW
	● TAD 2RG 4M3		4 × 3 kW

Max. H [m]		
T <sub>1</sub>	29.75	> 29.75
T <sub>2</sub>	38.7	> 38.7

	Sollevamento		Hoisting		Heben		Elevación	
	Traslazione carrello		Trolleying		Katzfahren		Distribución	
	Rotazione		Slewing		Schwenken		Orientación	
	Traslazione		Travelling		Schienenfahren		Traslación	
	Direttiva sul livello acustico		Directive on noise level		Richtlinie für den Schall-Leistungspegel		Directiva sobre el nivel acustico	
	Consultateci		Consult us		Auf Anfrage		Consultarnos	
	Potenza totale richiesta		Power requirements		Geforderte Stromstärke		Potencia necesaria	
	Alimentazione		Power supply		Stromversorgung		Alimentación	

Gru Comedil s.r.l.

A Terex Company



Via S. Egidio 42/A, 33074 Fontanafredda (PN) - Italy  
Tel. (+39) 0434 567 311 - Telefax (+39) 0434 998631

Internet e-mail: info@comedil.com

Internet home page: www.comedil.com

Divisione Automontanti

Via Alessandrina, 25 - 20095 Cusano Milanino (MI) - Italy  
Tel. (+39) 02 613 16011 - Telefax (+39) 02 613 16034

Internet e-mail: info.CBR@comedil.com