

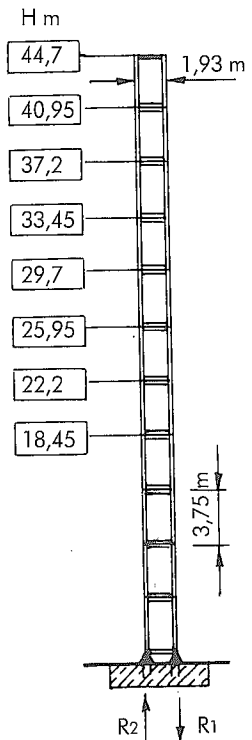
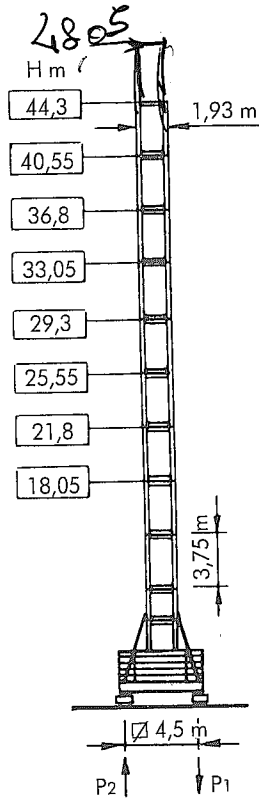
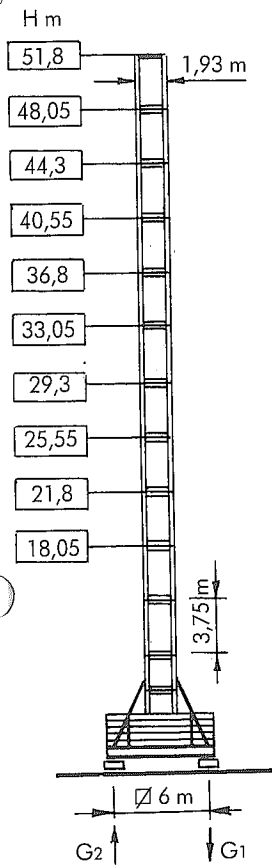
**GRU A TORRE**  
**SISTEMA MODULARE**  
**GIUNZIONE A SPINE**

**TOWER CRANE**  
**MODULAR SYSTEM**  
**PIN CONNECTION**

**CT 651**



# CT 651 S 20



<b>G 1</b>	83,3 t *	88 t °
<b>G 2</b>		4 t °
	62,8 t	

<b>P 1</b>	89,7 t *	85,7 t °
<b>P 2</b>		6,2 t °
	58,3 t	

<b>R 1</b>	131,9 t *	132,5 t °
<b>R 2</b>	92,2 t *	91,2 t °
	51,2 t	

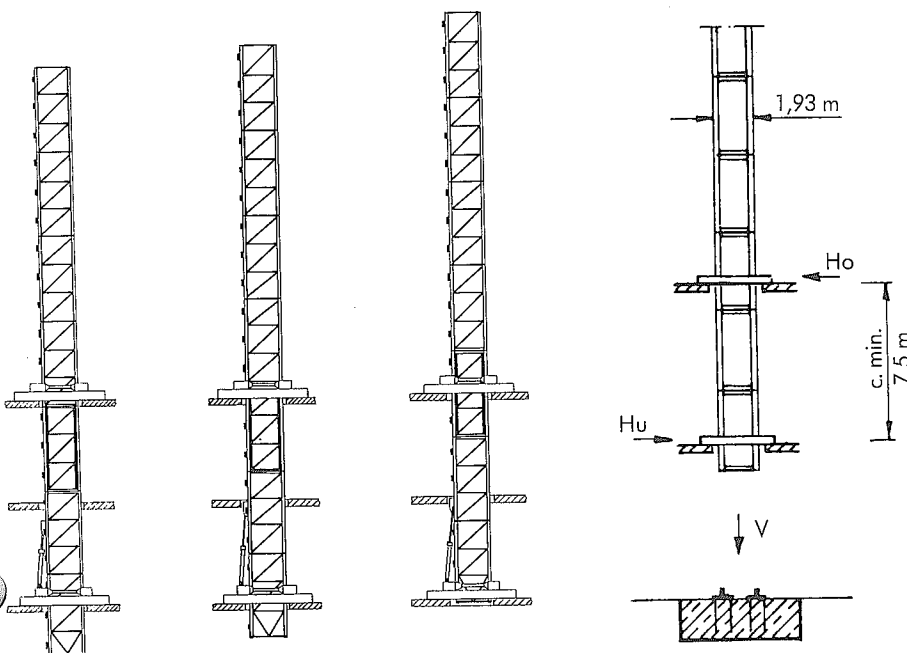
$H > H_{max}$  consultateci  
 $H > H_{max}$  consult us

Peso gru senza zavorra  
 max H max sbraccio

Weight without ballast  
 max height max jib length

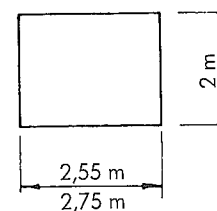
\* In servizio  
 • Fuori servizio

\* In service  
 • Out of service



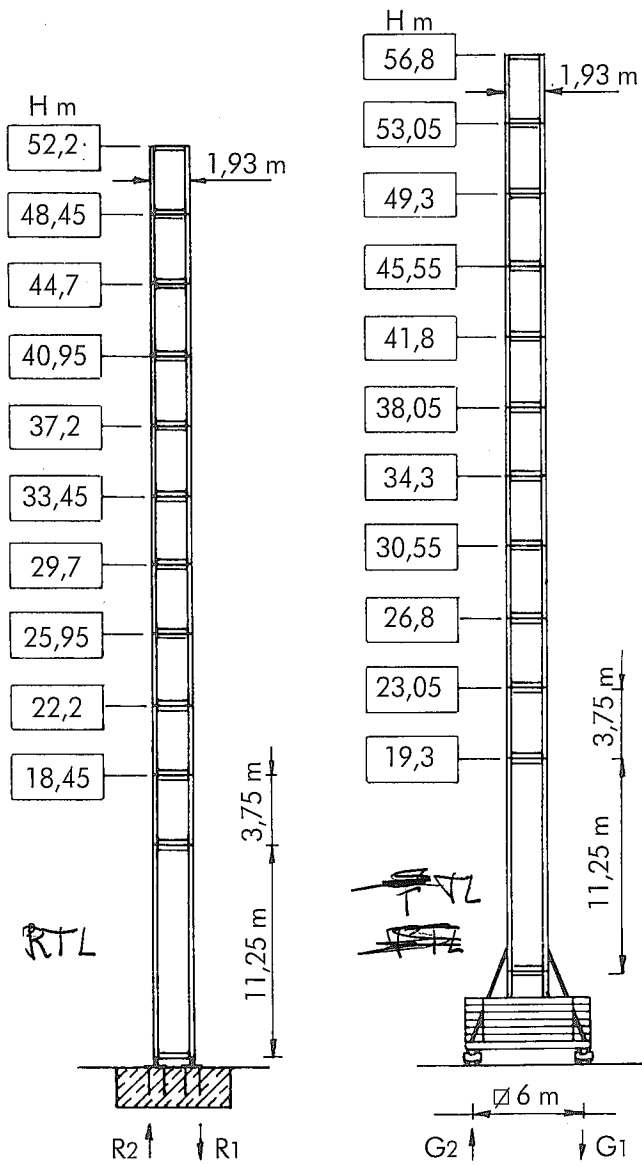
<b>Ho</b>	32,7 t *	28 t °
<b>Hu</b>	30,7 t *	17,3 t °
<b>V</b>	73 t	

Per ulteriori informazioni vedi scheda tecnica



CLIMBING: H = 33,45 m

# CT 651 S 20 TL



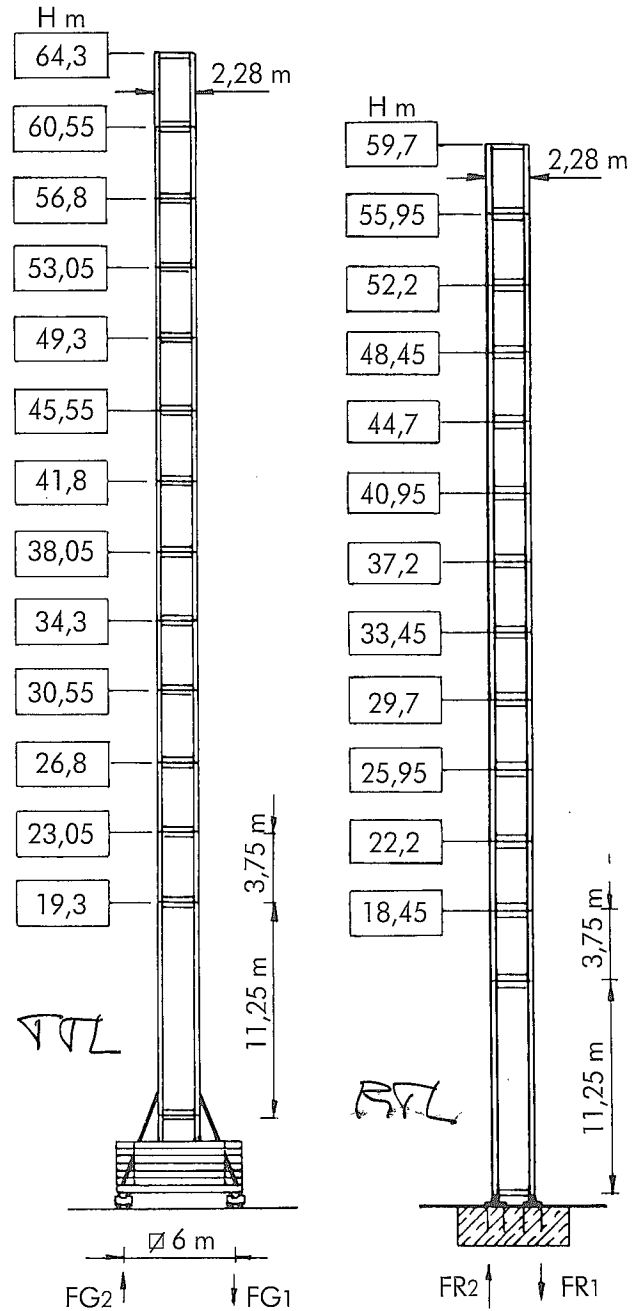
R1	155 t*	185 t°
R2	111,3 t*	145 t°
	54,8 t	

G1	90,4 t*	107 t°
G2		14 t°
	66,3 t	

Peso gru senza zavorra  
max H max sbraccio

Weight without ballast  
max height max jib length

# CT 651 S 23



FG1	95 t*	122 t°
FG2		27 t°
	70,8 t	










FR1	129 t*	191 t°
FR2	83 t*	150 t°
	59,8 t	




\* In servizio  
° Fuori servizio

\* In service  
° Out of service



POTENZA TOTALE RICHIESTA NECESSARY POWER SUPPLY	ARGANI WINCHES	CORRENTE TRIFASE THREE-PHASE CURRENT
53 Kw	SL 40	380 V - 50 Hz
56 Kw	AWLR 505	380 V - 50 Hz
56 Kw	AWLR 506	380 V - 50 Hz
71 Kw	AWLR 706	380 V - 50 Hz

ARGANI - WINCHES		m/min.	t.	HP	Kw					
SL 40		7,5	5	40	30	220 m max				
		30	5							
		60	2,5							
		3,8	10							
		15	10							
		30	5							
AWLR 505		0 → 40	5	50	37	350 m max				
		0 → 50	4							
		0 → 66	3							
		0 → 100	2							
		0 → 20	10							
		0 → 25	8							
		0 → 33	6							
		0 → 50	4							
		AWLR 506				0 → 33	6	50	37	350 m max
						0 → 44	4,6			
0 → 57	3,5									
0 → 84	2,4									
	0 → 16,5		12							
	0 → 22		9,2							
	0 → 28,5		7							
	0 → 42		4,8							
	AWLR 706			0 → 47	6	70	52			350 m max
				0 → 61	4,6					
0 → 80		3,5								
0 → 116		2,4								
		0 → 23,5	12							
		0 → 30,5	9,2							
		0 → 40	7							
		0 → 58	4,8							

CARRELLO - TROLLEY		C3V	0-10-30-65 m/min	6/5 Kgm	6 Kw
ROTAZIONE - SLEWING		GVP	0 - 0,8 n/min	2 x 7,5 HP	2 x 5,5 Kw
TRASLAZIONE - TRAVELLING		TR - TC	0-12-24 m/min	2 x 3,7 Kgm	2 x 6 Kw

In accordo con le normative C.E.E. 87/405 riguardanti il livello acustico.  
In accordance with C.E.E. standards 87/405 for the acoustic level.



Via S. Egidio 42/A - 33074 Fontanafredda (PN) - ITALY  
Tel. 0434/997580 - Telex 450256 GRUCOM I - Telefax 0434 - 998631

CASAGRANDE GROUP

AGENTE/DEALER