

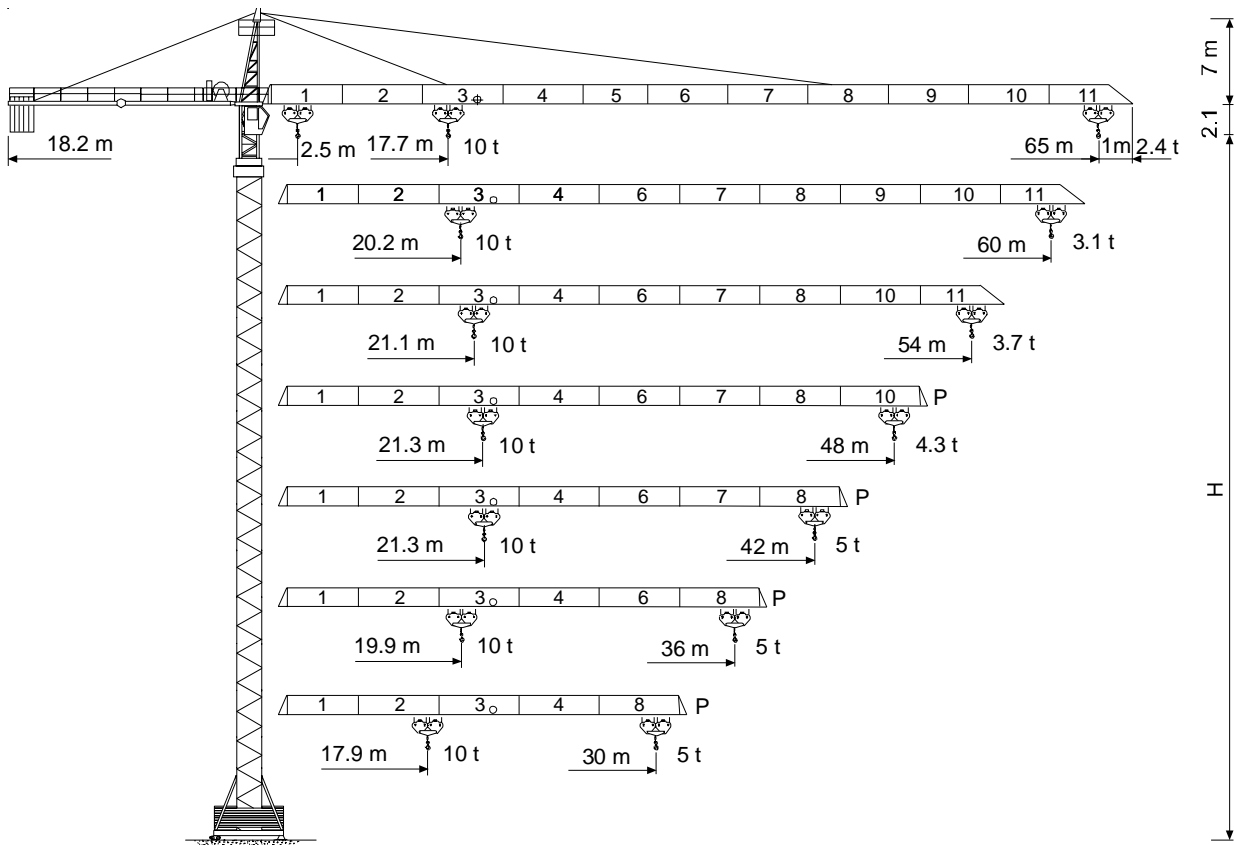


TEREX | COMEDIL

Gru a torre

Tower Crane • Grue à tour

Turmdrehkran • Grua torre



CE FEM 1.001 A3

THE **ULTIMATE** CRANE™

Dati illustrativi non impegnativi
Con riserva di modifica senza preavviso

Specifications and data not binding
Subject to modification without notice

Données techniques seulement indicatives
Modifications réservées sans préavis

Angaben und Beschreibung unverbindlich
Änderungen vorbehalten ohne weitere Mitteilung

Dibujos y datos sin compromiso
Modificaciones reservadas sin preaviso

UTE.DOC. REV.001

CT 212-10 H20



CT 212-10

Diagramma di portata
Load Diagram

I
GB

Courbes de charges
Lastkurven

F
D

Curvas de cargas

E

CT 212-10



m

| | 10 | 16 | 22 | 28 | 30 | 34 | 36 | 40 | 42 | 46 | 48 | 50 | 54 | 58 | 60 | 62 | 65 |
|--------------|----|----|------|------|------|------|------|------|------|------|------|------|------|------|------|------|------|
| 5t - 34.9 m | 5 | 5 | 5 | 5 | 5 | 5 | 4.82 | 4.28 | 4.04 | 3.64 | 3.46 | 3.3 | 3.01 | 2.76 | 2.65 | 2.54 | 2.4 |
| 10t - 17.7 m | 10 | 10 | 7.84 | 5.93 | 5.47 | 4.7 | 4.38 | 3.83 | 3.6 | 3.19 | 3.01 | 2.85 | 2.56 | 2.31 | 2.2 | 2.09 | 1.95 |
| 5t - 39.7 m | 5 | 5 | 5 | 5 | 5 | 5 | 5 | 4.95 | 4.69 | 4.22 | 4.02 | 3.84 | 3.51 | 3.22 | 3.1 | | |
| 10t - 20.2 m | 10 | 10 | 9.07 | 6.89 | 6.36 | 5.49 | 5.12 | 4.5 | 4.24 | 3.78 | 3.58 | 3.39 | 3.06 | 2.77 | 2.65 | | |
| 5t - 41.5 m | 5 | 5 | 5 | 5 | 5 | 5 | 5 | 5 | 4.93 | 4.44 | 4.23 | 4.04 | 3.7 | | | | |
| 10t - 21.1 m | 10 | 10 | 9.53 | 7.26 | 6.7 | 5.79 | 5.4 | 4.76 | 4.48 | 4 | 3.79 | 3.59 | 3.25 | | | | |
| 5t - 42 m | 5 | 5 | 5 | 5 | 5 | 5 | 5 | 5 | 5 | 4.51 | 4.3 | | | | | | |
| 10t - 21.3 m | 10 | 10 | 9.66 | 7.36 | 6.8 | 5.87 | 5.48 | 4.83 | 4.55 | 4.06 | 3.85 | | | | | | |
| 5t - 42 m | 5 | 5 | 5 | 5 | 5 | 5 | 5 | 5 | 5 | | | | | | | | |
| 10t - 21.3 m | 10 | 10 | 9.65 | 7.35 | 6.79 | 5.87 | 5.48 | 4.83 | 4.55 | | | | | | | | |
| 5t - 36 m | 5 | 5 | 5 | 5 | 5 | 5 | 5 | | | | | | | | | | |
| 10t - 19.9 m | 10 | 10 | 8.94 | 6.80 | 6.27 | 5.41 | 5.05 | | | | | | | | | | |
| 5t - 30 m | 5 | 5 | 5 | 5 | 5 | | | | | | | | | | | | |
| 10t - 17.9 m | 10 | 10 | 7.96 | 6.02 | 5.55 | | | | | | | | | | | | |

Altre installazioni
Other configurations

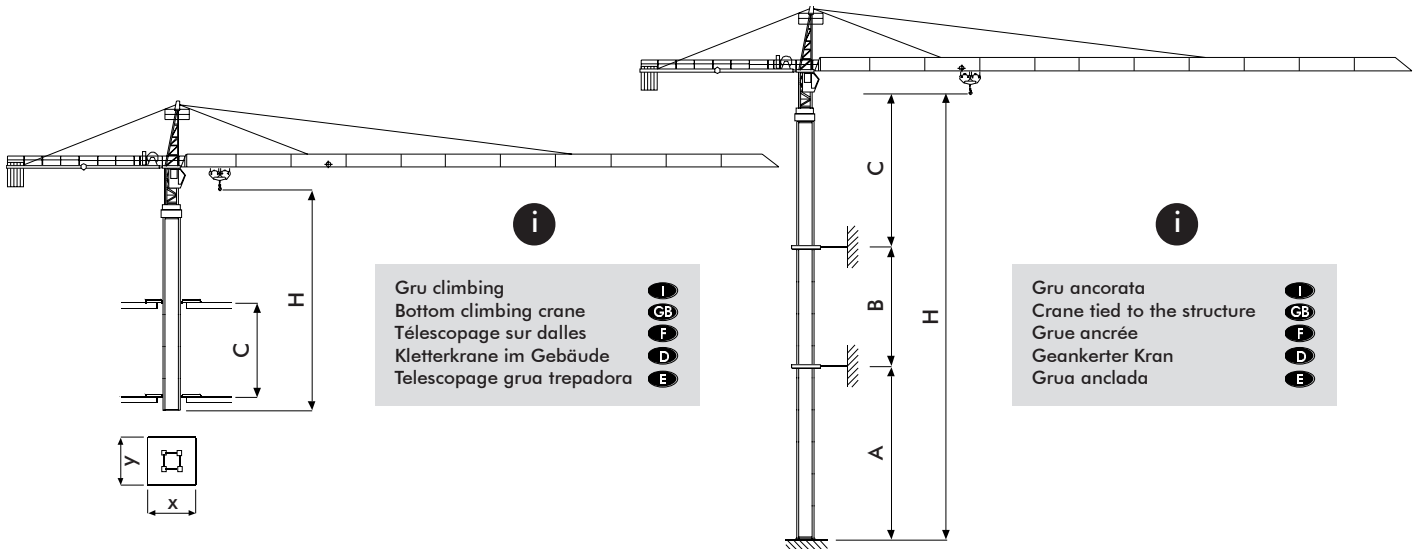
I
GB

Autres implantations
Aufstellmöglichkeiten

F
D

Otras implantaciones

E



Gru climbing
Bottom climbing crane
Télescage sur dalles
Kletterkrane im Gebäude
Télescage grua trepadora

I
GB
F
D
E

Gru ancorata
Crane tied to the structure
Grue ancrée
Geankerter Kran
Grúa anclada

I
GB
F
D
E

| H20 | | | |
|------------------|------|----------------------|----------------------|
| [m] | | | |
| | 65 | 30-36-42 48-54-60 | 30-36-42 48-54-60 |
| C _{min} | 10 | 9 | 12 |
| H _{max} | 40.6 | 40.6 | 44.35 |
| x | 2.6 | | |
| y | 2.08 | | |

| H20 R2 | |
|----------------------|---------|
| m | |
| A _{min/max} | 25/45 |
| B _{min/max} | 15/22.5 |
| C _{max} | 30 |
| H _{max} | I |



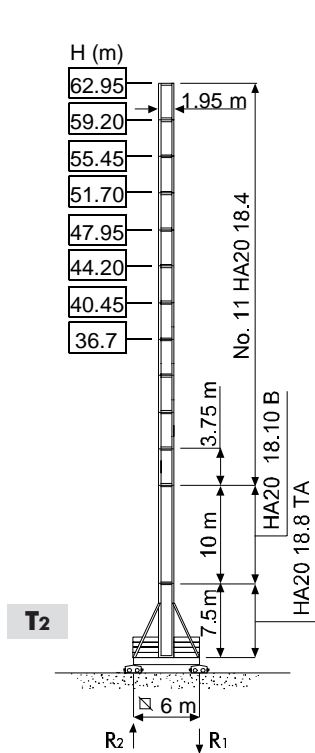
CT 212-10

Torre **I**
Tower **GB**

Tour **F**
Turm **D**

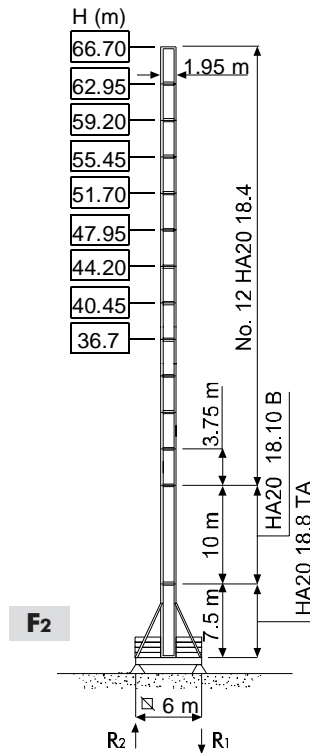
Mástil **E**

H20



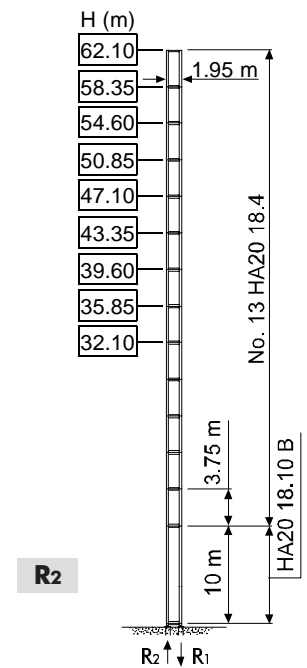
T2

| | | |
|----|-----------|-----------|
| R1 | 1250 kN ● | 1400 kN ◊ |
| R2 | - | 100 kN ◊ |
| | 90 t | |



F2

| | | |
|----|-----------|-----------|
| R1 | 1250 kN ● | 1500 kN ◊ |
| R2 | - | 200 kN ◊ |
| | 90 t | |



R2

| | | |
|----|-----------|-----------|
| R1 | 1500 kN ● | 2600 kN ◊ |
| R2 | 900 kN ● | 2100 kN ◊ |
| | 73 t | |

| | | | | | | |
|---|--|---|---|--|--|----------|
| H | Altezza massima s. g. | I Max. under hook height | GB Hauteur maxi. sous crochet | F Höchste Hackenhöhe | D Maxima altura bajo gancho | E |
| ● | In servizio | In service | En service | In Betrieb | En servicio | |
| ◊ | Fuori servizio | Out of service | Hors service | Außer Betrieb | Fuera de servicio | |
| | A vuoto, senza zavorra, braccio max., altezza max. | Without load, without ballast, max. jib and max. height | A vide, sans lest, avec flèche et hauteur maximum | Ohne Last und Ballast, mit Maximalausleger und Maximalhöhe | Sin carga, sin lastre, con pluma y altura máxima | |



CT 212-10

Meccanismi
Mechanisms



Mécanismes
Antriebe



Mecanismos



| | | |
|----------|-------------------------------|------------|
| | | |
| 72 * kVA | 400 V - 50 Hz / 460 V - 60 Hz | 2000/14/CE |

* Gru senza traslazione / Crane without travelling equipment / Grue sans translation / Krane ohne Schienenfahren / Grúa sin traslación

| | | m/min | t | kW | | |
|--|----------------------------|-------|---------|------|----|-------|
| | 30 AFC 50 (VARIANT) | | 0 ⇨ 2 | 5 | 30 | 410 m |
| | | | 2 ⇨ 6 | 5 | | |
| | | | 6 ⇨ 27 | 5 | | |
| | | | 27 ⇨ 41 | 3.16 | | |
| | | | 41 ⇨ 54 | 2.27 | | |
| | | | 0 ⇨ 1 | 10 | | |
| | | | 1 ⇨ 3 | 10 | | |
| | | | 3 ⇨ 14 | 10 | | |
| | | | 14 ⇨ 21 | 6.32 | | |
| | | | 21 ⇨ 27 | 4.54 | | |

| | | | |
|--|----------------------|-----------------------|-----------|
| | DVF 3 6 D1 | 0 ⇨ 9 ⇨ 36 ⇨ 72 m/min | 5.5 kW |
| | SSR 2 2 65 | 0.7 r.p.m. | 2 × 65 Nm |
| | ▲ TAD 2RG 4M3 | 0 - 24 m/min | 4 × 3 kW |
| | ● TSR 2RG 4M8 | 12 ⇨ 24 m/min | 4 × 80 Nm |
| | | | |

| | | |
|----------------------|-------------------|--------|
| | ▲ | ● |
| | Max. H [m] | |
| T₂ | 48.3 | > 48.3 |

| | | | | | | | | | | |
|--|--------------------------------|--|--------------------------|--|------------------------------------|--|--|--|-----------------------------------|--|
| | Sollevamento | | Hoisting | | Levage | | Heben | | Elevación | |
| | Traslazione carrello | | Trolleying | | Distribution | | Katzfahren | | Distribución | |
| | Rotazione | | Slewing | | Orientation | | Schwenken | | Orientación | |
| | Traslazione | | Travelling | | Translation | | Schienenfahren | | Traslación | |
| | Direttiva sul livello acustico | | Directive on noise level | | Directive sur le niveau acoustique | | Richtlinie für den Schall-Leistungspegel | | Directiva sobre el nivel acustico | |
| | Consultateci | | Consult us | | Nous consulter | | Auf Anfrage | | Consultarnos | |
| | Potenza totale richiesta | | Power requirements | | Puissance totale nécessaire | | Geforderte Stromstärke | | Potencia necesaria | |
| | Alimentazione | | Power supply | | Alimentation | | Stromversorgung | | Alimentación | |

Gru Comedil s.r.l.

A Terex Company

Via S. Egidio 42/A, 33074 Fontanafredda (PN) - Italy
Tel. (+39) 0434 567 311 - Telefax (+39) 0434 998631

Internet e-mail: info@comedil.com
Internet home page: www.comedil.com

Divisione Automontanti

Via Alessandrina, 25 - 20095 Cusano Milanino (MI) - Italy
Tel. (+39) 02 613 16011 - Telefax (+39) 02 613 16034

Internet e-mail: info.CBR@comedil.com

www.terex-cranes.com