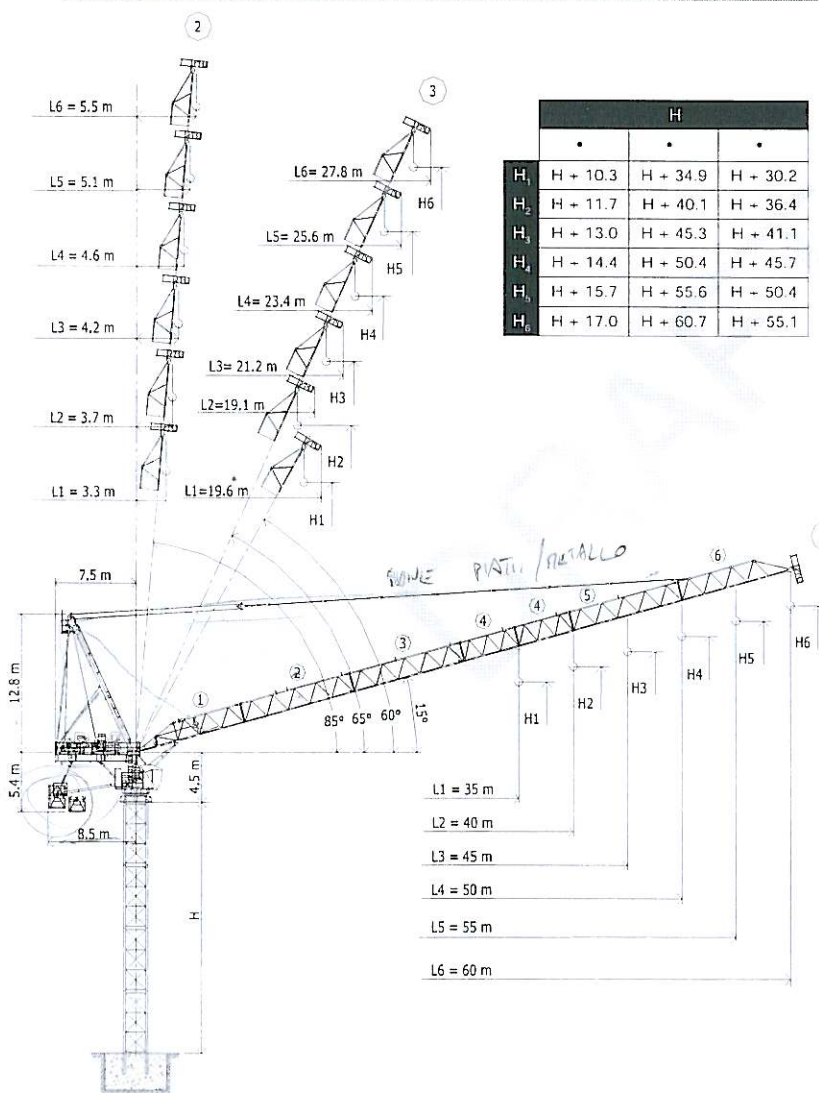


- Gru a torre a braccio impennabile  
Luffing Jib Tower Crane
- Grue à tour à flèche relevable
- Turmdrehkran mit Steilstellung-Ausleger
- Grúa torre de pluma abatible



	H		
H <sub>1</sub>	H + 10.3	H + 34.9	H + 30.2
H <sub>2</sub>	H + 11.7	H + 40.1	H + 36.4
H <sub>3</sub>	H + 13.0	H + 45.3	H + 41.1
H <sub>4</sub>	H + 14.4	H + 50.4	H + 45.7
H <sub>5</sub>	H + 15.7	H + 55.6	H + 50.4
H <sub>6</sub>	H + 17.0	H + 60.7	H + 55.1

- H Altezza torre (I)
- Sbraccio massimo
- Sbraccio minimo in servizio
- Sbraccio minimo in fuori servizio
- H Tower height (CB)
- Maximum jib
- Minimum jib (in service)
- Minimum jib (out of service)
- H Hauteur mât (F)
- Portée maxi.
- Portée min. en service
- Portée min. hors service
- H Turmhöhe (D)
- Max. Ausleger
- Mindest. Ausleger in Betrieb
- Mindest. Ausleger außer Betrieb
- H Altura torre (E)
- Pluma maxima
- Pluma minima en servicio
- Pluma minima fuera de servicio

L1	= 35 m
L2	= 40 m
L3	= 45 m
L4	= 50 m
L5	= 55 m
L6	= 60 m

L <sub>1</sub>	(35 m) = 1 + 2 + 4 + 6
L <sub>2</sub>	(40 m) = 1 + 2 + 3 + 6
L <sub>3</sub>	(45 m) = 1 + 2 + 3 + 4 + 6
L <sub>4</sub>	(50 m) = 1 + 2 + 3 + 5 + 6
L <sub>5</sub>	(55 m) = 1 + 2 + 3 + 4 + 5 + 6
L <sub>6</sub>	(60 m) = 1 + 2 + 3 + 4 + 4 + 5 + 6

CE FEM 1.001 A3

Dati illustrativi non impegnativi  
Con riserva di modifica senza preavviso

Specifications and data not binding  
Subject to modification without notice

Données techniques seulement indicatives  
Modifications réservées sans préavis

Angaben und Beschreibung unverbindlich  
Änderungen vorbehalten ohne weitere Mitteilung

Dibujos y datos sin compromiso  
Modificaciones reservadas sin preaviso

UTED06.REV.000

CTL 430-24 HD23

Diagramma di portata  
Load Diagram



Courbes de charges  
Lastkurven



Curvas de cargas



CTL 430 - 24																
				m	10	15	20	25	30	35	40	45	50	55	60	
12 t			28.5	m	t	12.00	12.00	12.00	12.00	11.42	9.72	8.46	7.47	6.68	6.03	5.50
12 t			32.8	m	t	12.00	12.00	12.00	12.00	12.00	11.24	9.78	8.64	7.74	7.00	
	18 t		21.9	m	t	18.00	18.00	18.00	15.71	12.99	11.04	9.58	8.45	7.54	6.80	
12 t			37.9	m	t	12.00	12.00	12.00	12.00	12.00	12.00	11.35	10.04	9.00		
	18 t		25.0	m	t	18.00	18.00	18.00	18.00	14.89	12.64	10.96	9.64	8.60		
		24 t	19.0	m	t	24.00	24.00	22.76	18.04	14.89	12.64	10.96	9.64	8.60		
12 t			39.9	m	t	12.00	12.00	12.00	12.00	12.00	12.00	12.00	10.60			
	18 t		26.3	m	t	18.00	18.00	18.00	18.00	15.72	13.35	11.58	10.20			
		24 t	20.0	m	t	24.00	24.00	24.00	19.03	15.72	13.35	11.58	10.20			
12 t			40.0	m	t	12.00	12.00	12.00	12.00	12.00	12.00	12.00				
	18 t		27.2	m	t	18.00	18.00	18.00	18.00	16.28	13.83	12.00				
		24 t	20.6	m	t	24.00	24.00	24.00	19.70	16.28	13.83	12.00				
12 t			35.0	m	t	12.00	12.00	12.00	12.00	12.00	12.00					
	18 t		28.1	m	t	18.00	18.00	18.00	18.00	16.82	14.30					
		24 t	21.3	m	t	24.00	24.00	24.00	20.35	16.82	14.30					

\* = + 200 kg [ 50 m - 45 m - 40 m - 35 m ]

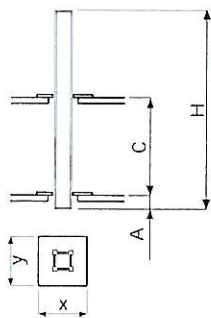
Altre installazioni  
Other configurations



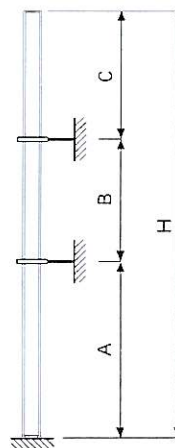
Autres implantations  
Aufstellmöglichkeiten



Otras implantaciones



Gru climbing  
Bottom climbing crane  
Télescopage sur dalles  
Kletterkran im Gebäude  
Grúa trepadora



Grú ancorata  
Crane tied to the structure  
Grue ancrée  
Geankerter Kran  
Grúa anclada



Meccanismi  
Mechanisms



Mécanismes  
Antriebe



Mecanismos



90 AFC 120 - LFC 80	246 kVA	400 V - 50 Hz / 460 V - 60 Hz		2000/14/CE

		m / m in		t	kw	
90 AFC 120 (VECTOR)		0 • 32	12	90	1030	
		0 • 41	9			
		0 • 58	6			
		0 • 103	3			
		0 • 130	2.1			
		0 • 21.3	18			
		0 • 27	13.5			
		0 • 39	9			
		0 • 69	4.5			
		0 • 87	3.15			
		0 • 16	24			
		0 • 20	18			
		0 • 29	12			
		0 • 51	6			
		0 • 65	4.2			

	LFC 80 (VECTOR)	2 min	80 kW
	SCC 2 2 132 M	0 • 0.64 r.p.m.	2 x 14.4 kW
	TSR 2RG 4M8	0 • 24 m/min	4 x 80 Nm

LUFFING  
SLEWING  
TRANSLATION

	Sollevamento		Hoisting		Levage		Heben		Elevación	
	Brandeggio		Luffing		Relevage		Ausleger-Einziehen		Elevación de pluma	
	Rotazione		Slewing		Orientation		Schwenken		Orientación	
	Traslazione		Travelling		Translation		Schienenfahren		Traslación	
	Direttiva sul livello acustico		Directive on noise level		Directive sur le niveau acoustique		Richtlinie für den Schall-Leistungspegel		Directiva sobre el nivel acustico	
	Consultateci		Consult us		Nous consulter		Auf Anfrage		Consultarnos	
	Potenza totale richiesta		Power requirements		Puissance totale nécessaire		Geforderte Stromstärke		Potencia necesaria	
	Alimentazione		Power supply		Alimentation		Stromversorgung		Alimentación	

**Gru Comedil s.r.l.**

A Terex Company  
Via S. Egidio 42/A, 33074 Fontanafredda (PN) - Italy  
Tel. (+39) 0434 567 311 - Telefax (+39) 0434 998631  
Internet e-mail: info@comedil.com  
Internet home page: www.comedil.com

**Divisione Automontanti**

Via Alessandrina, 25 - 20095 Cusano Milanino (MI) - Italy  
Tel. (+39) 02 613 16011 - Telefax (+39) 02 613 16034  
Internet e-mail: info.CBR@comedil.com